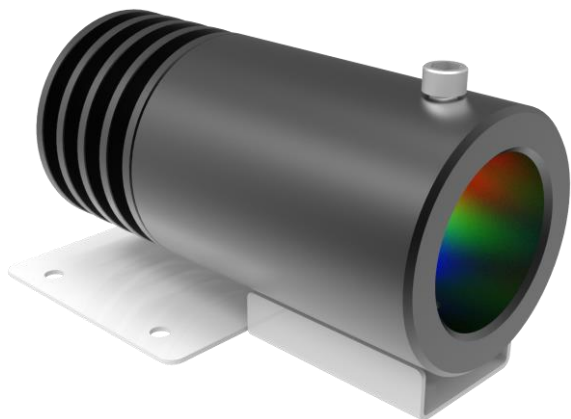


**Fiber optic
Illuminators
by**

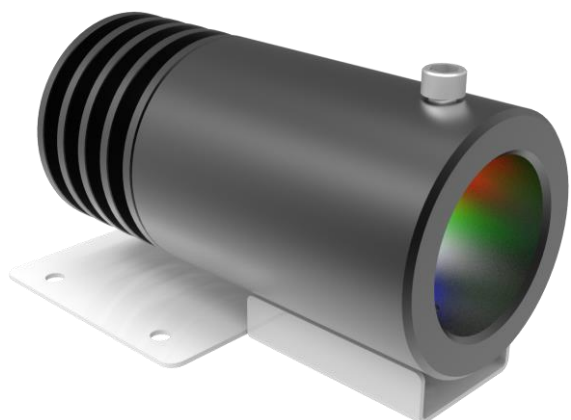
CEZOS 

LFM 302 - RGB ILLUMINATOR



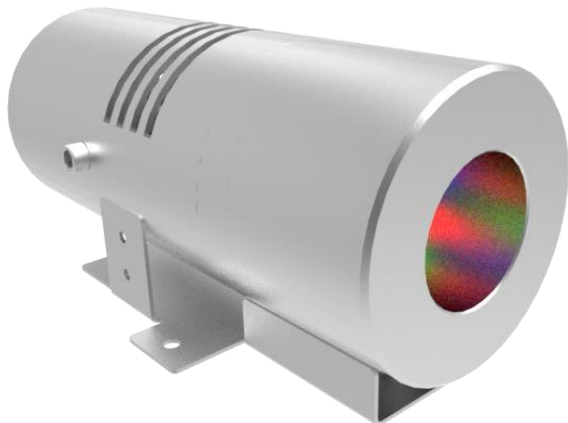
Description	LFM 302
Article Number	LW362503L302S
Dimension	100x60x52 mm
Power Supply Type	Constant Current (CC)
Number of Channels	3
Power	3 W
Nominal Current	350 mA each channel
Number of LEDs	3 pcs
Luminous Flux	36 lm Red 75 lm Green 25 lm Blue
Protection	IP 20
Diameter of Fiber Port	30 mm
Max Ambient Temperature	40°C

LFM 402 - RGBW ILLUMINATOR



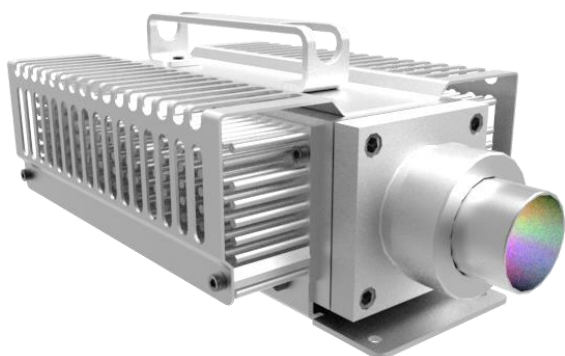
Description	LFM 402
Article Number	LW362505L402RGBW
Dimension	100x60x52 mm
Power Supply Type	Constant Current (CC)
Number of Channels	4
Power	4 W
Nominal Current	350 mA each channel
Number of LEDs	4 pcs
Luminous Flux	36 lm Red 75 lm Green 25 lm Blue 99 lm White @ 3000 K
Protection	IP 20
Diameter of Fiber Port	30 mm
Max Ambient Temperature	40°C

LFM 601 - RGB ILLUMINATOR



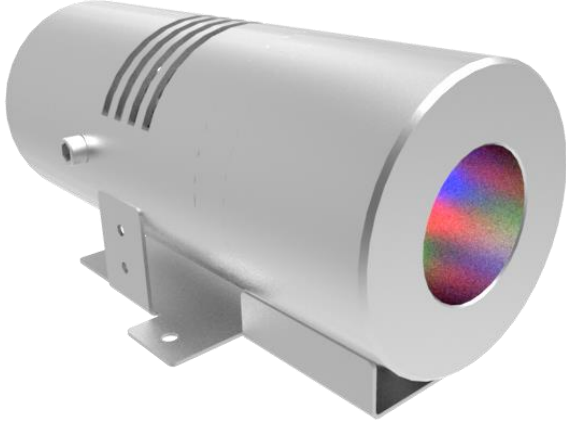
Description	LFM 601
Article Number	LW362518L603S
Dimension	124x72x57 mm
Power Supply Type	Constant Current (CC)
Number of Channels	3
Power	21 W
Nominal Current	350 mA each channel
Number of LEDs	6 pcs
Luminous Flux	210 lm Red 342 lm Green 78 lm Blue
Protection	IP 20
Diameter of Fiber Port	30 mm
Max Ambient Temperature	40°C

LFM 601 Hydro - RGB ILLUMINATOR



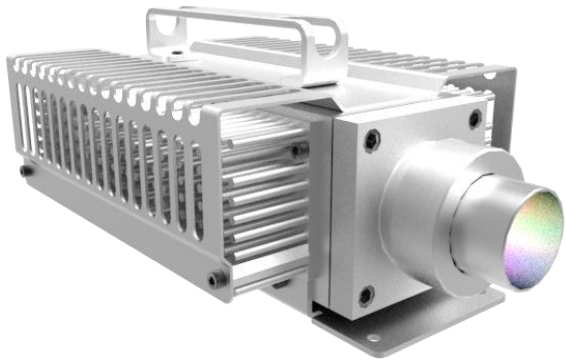
Description	LFM 601 Hydro
Article Number	LW362518H603S
Dimension	230,5x135x90,75 mm
Power Supply Type	Constant Current (CC)
Number of Channels	3
Power	21 W
Nominal Current	350 mA each channel
Number of LEDs	6 pcs
Luminous Flux	210 lm Red 342 lm Green 78 lm Blue
Protection	IP 67
Diameter of Fiber Port	30 mm
Max Ambient Temperature	40°C

LFM 602 - RGBW ILLUMINATOR



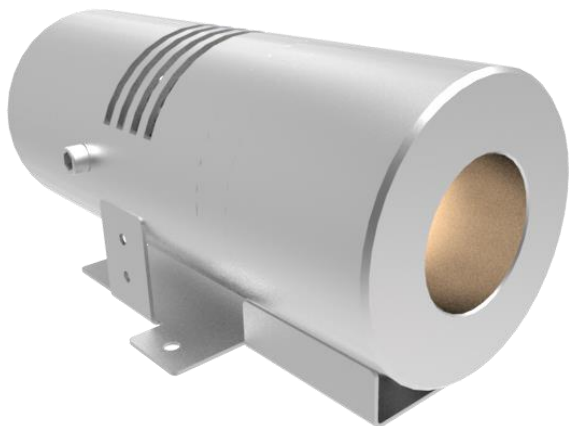
Description	LFM 602
Article Number	LW362525L602RGBW
Dimension	124x72x57 mm
Power Supply Type	Constant Current (CC)
Number of Channels	4
Power	25 W
Nominal Current	350 mA each channel
Number of LEDs	6 pcs
Luminous Flux	480 lm Red 706 lm Green 161 lm Blue 720 lm White @ 4000 K
Protection	IP 20
Diameter of Fiber Port	30 mm
Max Ambient Temperature	40°C

LFM 602 Hydro - RGBW ILLUMINATOR



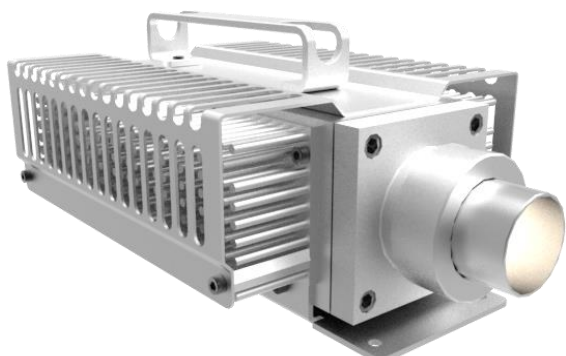
Description	LFM 602 Hydro
Article Number	LW362525H602RGBW
Dimension	230,5x135x90,75 mm
Power Supply Type	Constant Current (CC)
Number of Channels	4
Power	25 W
Nominal Current	350 mA each channel
Number of LEDs	6 pcs
Luminous Flux	480 lm Red 706 lm Green 160 lm Blue 720 lm White @ 4000 K
Protection	IP 67
Diameter of Fiber Port	30 mm
Max Ambient Temperature	40°C

LFM 701 WW - WARM WHITE ILLUMINATOR



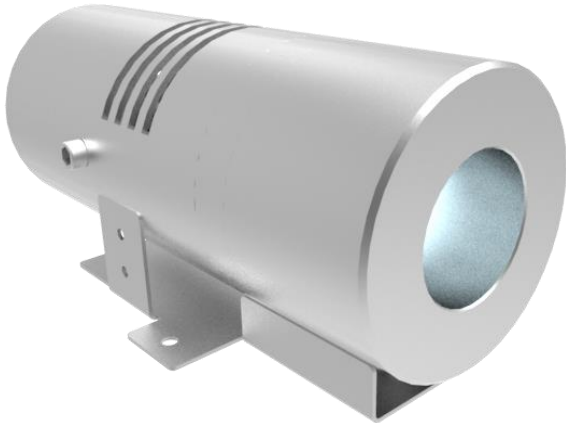
Description	LFM 701 WW
Article Number	LW362518L701W
Dimension	124x72x57 mm
Power Supply Type	Constant Current (CC)
Power	15,5 W
Nominal Current	700 mA
Number of LEDs	7 pcs
Luminous Flux	1260 lm @ 3000K
Protection	IP 20
Diameter of Fiber Port	30 mm
Max Ambient Temperature	40°C

LFM 701 Hydro - WARM WHITE ILLUMINATOR



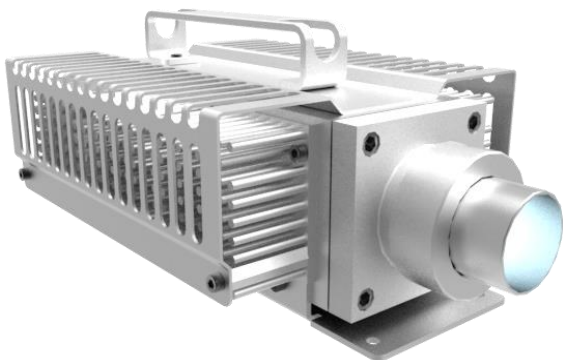
Description	LFM 701 Hydro WW
Article Number	LW362518H701W
Dimension	230,5x135x90,75 mm
Power Supply Type	Constant Current (CC)
Power	15,5 W
Nominal Current	700 mA
Number of LEDs	7 pcs
Luminous Flux	1260 lm @ 3000K
Protection	IP 67
Diameter of Fiber Port	30 mm
Max Ambient Temperature	40°C

LFM 701 CW - COLD WHITE ILLUMINATOR



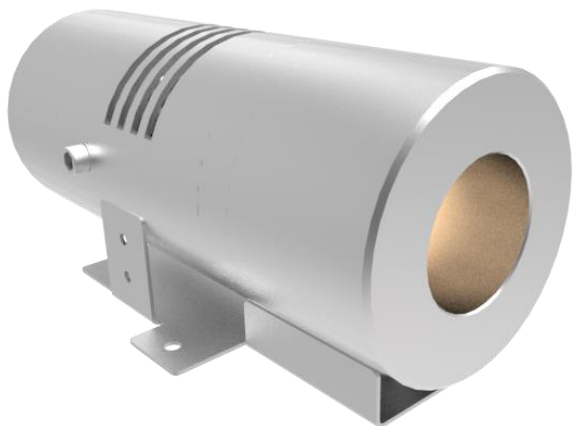
Description	LFM 701 CW
Article Number	LW362518L701C
Dimension	124x72x57 mm
Power Supply Type	Constant Current (CC)
Power	15,5 W
Nominal Current	700 mA
Number of LEDs	7 pcs
Luminous Flux	1751 lm @ 5700K
Protection	IP 20
Diameter of Fiber Port	30 mm
Max Ambient Temperature	40°C

LFM 701 Hydro - COLD WHITE ILLUMINATOR



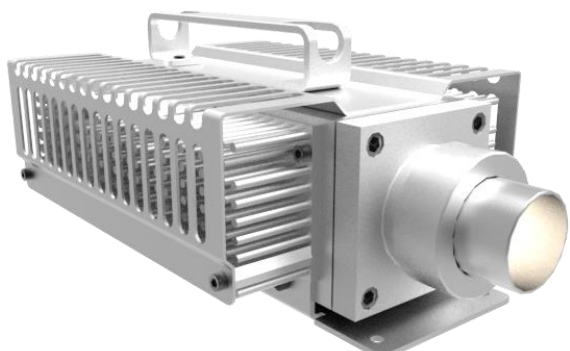
Description	LFM 701 Hydro CW
Article Number	LW362518H701C
Dimension	230,5x135x90,75 mm
Power Supply Type	Constant Current (CC)
Power	15,5 W
Nominal Current	700 mA
Number of LEDs	7 pcs
Luminous Flux	1751 lm @ 5700K
Protection	IP 67
Diameter of Fiber Port	30 mm
Max Ambient Temperature	40°C

LFM 702 WW - WARM WHITE ILLUMINATOR



Description	LFM 702 WW
Article Number	LW362525L702W
Dimension	124x72x57 mm
Power Supply Type	Constant Current (CC)
Power	22 W
Nominal Current	1050 mA
Number of LEDs	7 pcs
Luminous Flux	1820 lm @ 3000 K
Protection	IP 20
Diameter of Fiber Port	30 mm
Max Ambient Temperature	40°C

LFM 702 Hydro - WARM WHITE ILLUMINATOR



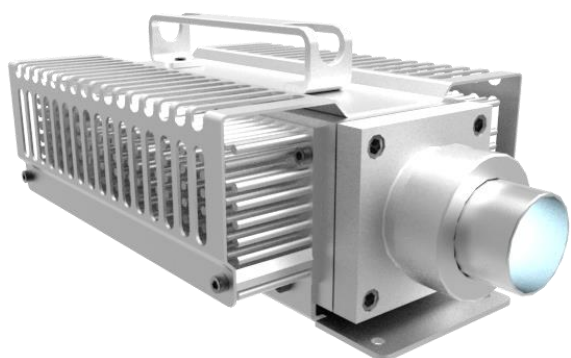
Description	LFM 702 Hydro WW
Article Number	LW362525H702W
Dimension	230,5x135x90,75 mm
Power Supply Type	Constant Current (CC)
Power	22 W
Nominal Current	1050 mA
Number of LEDs	7 pcs
Luminous Flux	1820 lm @ 3000 K
Protection	IP 67
Diameter of Fiber Port	30 mm
Max Ambient Temperature	40°C

LFM 702 CW - COLD WHITE ILLUMINATOR



Description	LFM 702 CW
Article Number	LW362525L702C
Dimension	124x72x57 mm
Power Supply Type	Constant Current (CC)
Power	22 W
Nominal Current	1050 mA
Number of LEDs	7 pcs
Luminous Flux	2530 lm @ 5700 K
Protection	IP 20
Diameter of Fiber Port	30 mm
Max Ambient Temperature	40°C

LFM 702 Hydro - COLD WHITE ILLUMINATOR



Description	LFM 702 Hydro CW
Article Number	LW362525H702C
Dimension	230,5x135x90,75 mm
Power Supply Type	Constant Current (CC)
Power	22 W
Nominal Current	1050 mA
Number of LEDs	7 pcs
Luminous Flux	2530 lm @ 5700 K
Protection	IP 67
Diameter of Fiber Port	30 mm
Max Ambient Temperature	40°C

RAZOR MONO - WARM WHITE ILLUMINATOR



Description	RAZOR MONO WW
Article Number	LW35RAZWWSET
Dimension of generator	359x152x97 mm
Dimension of driver	170x91x51 mm
Power Supply Type	Constant Voltage (CV)
Power Supply Voltage	26 - 48 V
Max. Power	76 W
Max. Current	3000 mA
Number of LEDs	7 pcs
Luminous flux	up to 6211 lm @ 3000 K
Protection	IP 20
Diameter of fiber port	30 mm
Max Ambient Temperature	40°C

RAZOR MONO - COLD WHITE ILLUMINATOR



Description	RAZOR MONO CW
Article Number	LW35RAZCWSET
Dimension of generator	359x152x97 mm
Dimension of driver	170x91x51 mm
Power Supply Type	Constant Voltage (CV)
Power Supply Voltage	26 - 48 V
Max. Power	76 W
Max. Current	3000 mA
Number of LEDs	7 pcs
Luminous flux	up to 7780 lm @ 6500 K
Protection	IP 20
Diameter of fiber port	30 mm
Max Ambient Temperature	40°C

RAZOR RGBW - RGBW ILLUMINATOR



Description	RAZOR RGBW
Article Number	LW35RAZRGBWSET
Dimension of generator	359x152x97 mm
Dimension of driver	170x91x51 mm
Power Supply Type	Constant Voltage (CV)
Power Supply Voltage	26 - 48 V
Number of channels	4
Max. Power	64 W
Max. Current	700 mA each channel
Number of LEDs	7 pcs
Luminous Flux	608 lm Red 918 lm Green 170 lm Blue 1225 lm White @ 4000 K
Protection	IP 20
Diameter of fiber port	30 mm
Max Ambient Temperature	40°C